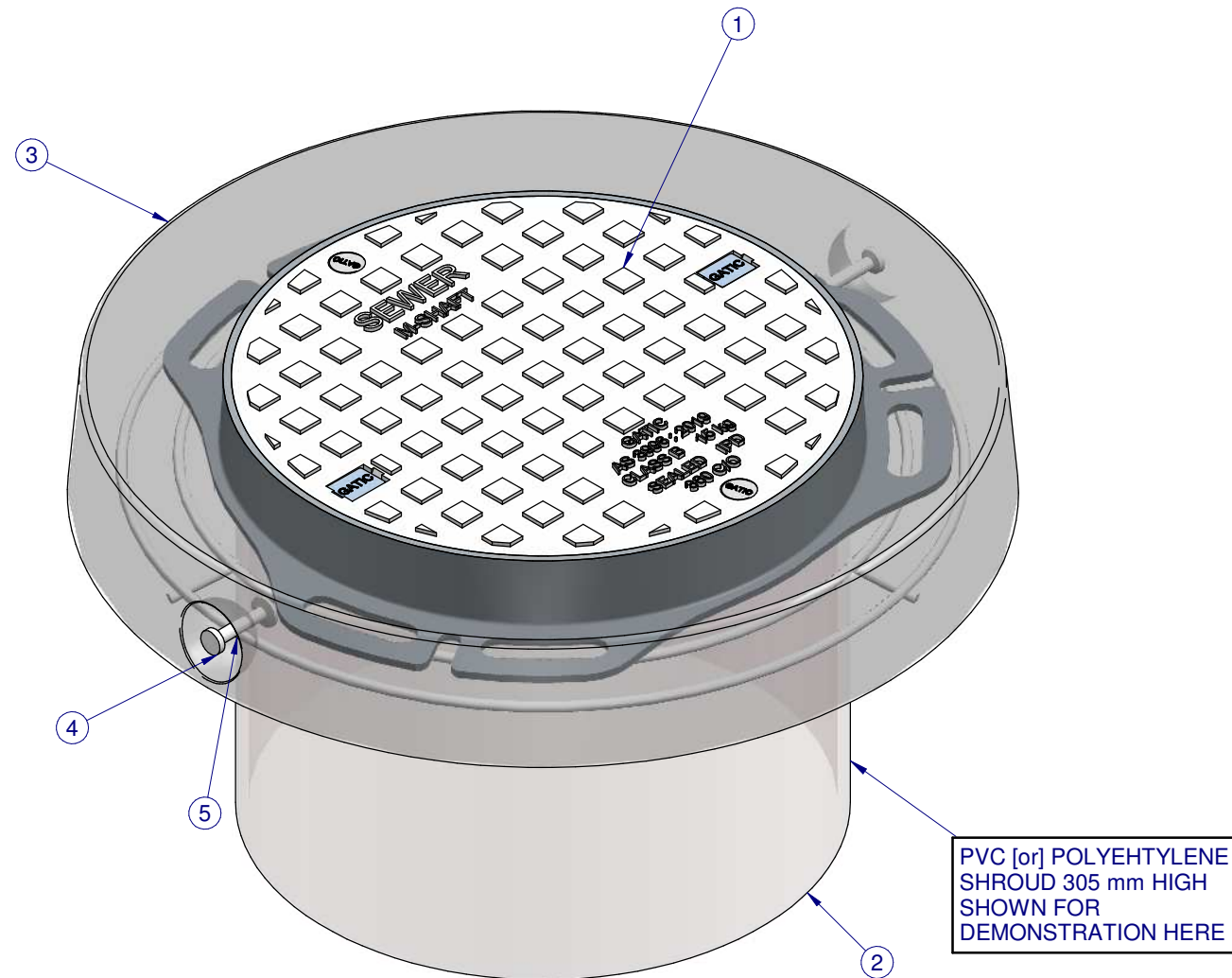
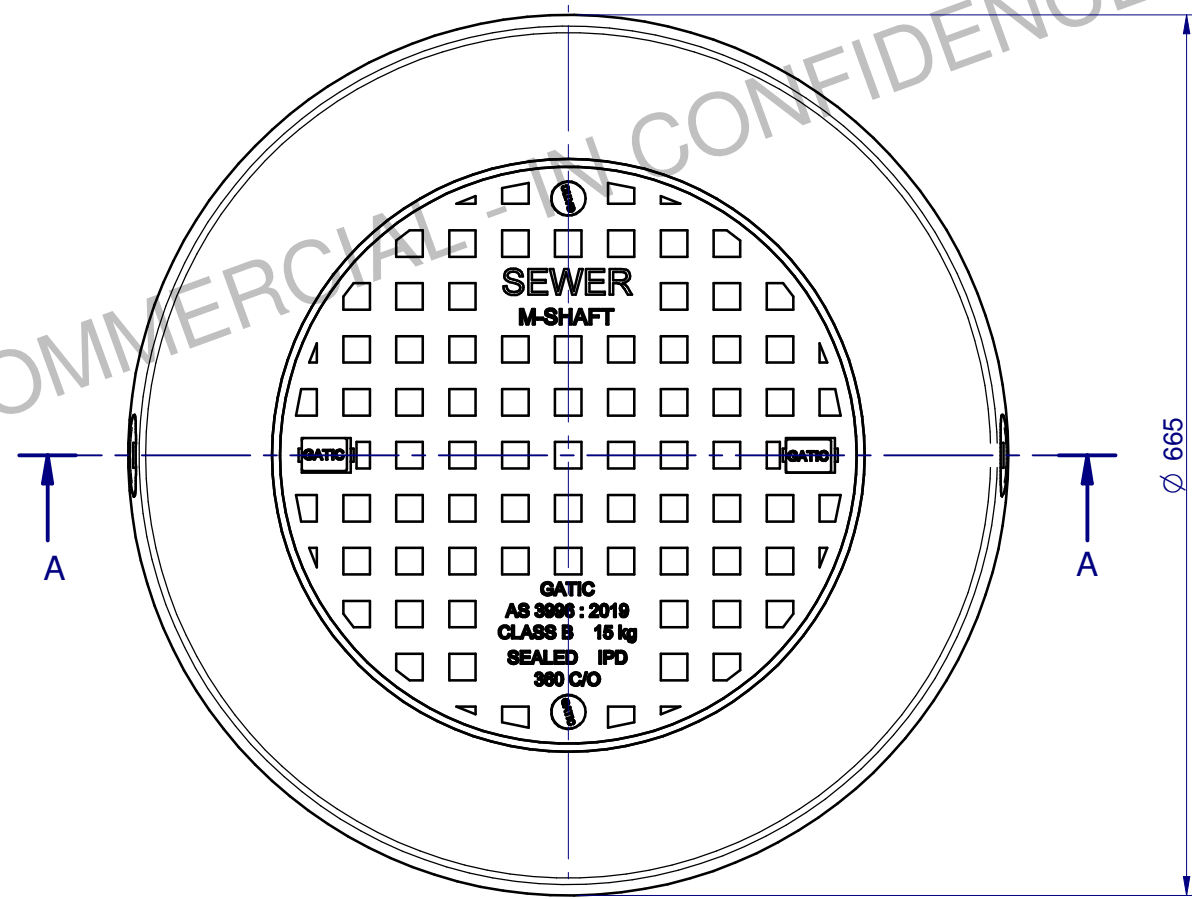
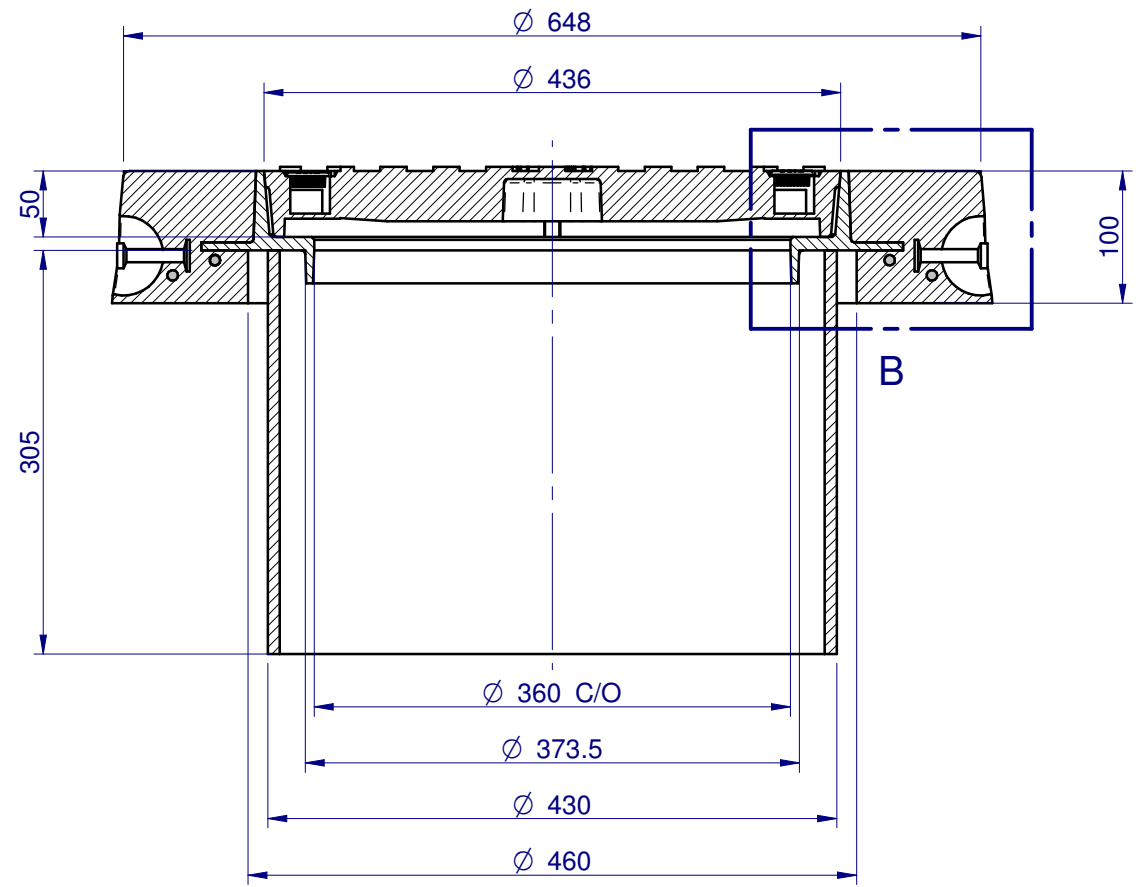


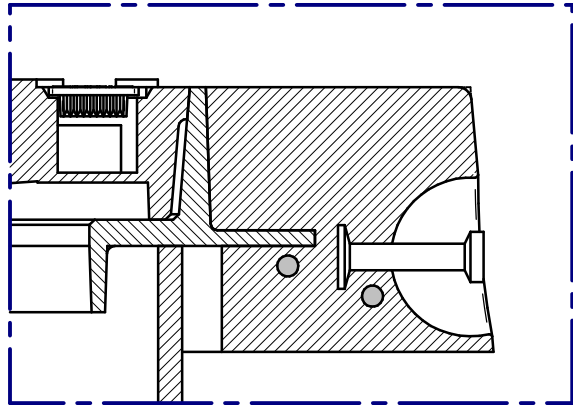
TOP VIEW



ISOMETRIC VIEW



SECTION A-A



DETAIL B

*NOTE:
- ITEM #2 SHOWN FOR DEMONSTRATION ONLY

GMCE300S36B2						
Item	Dwg. No.	Rev.	Description	Material	Qty	Mass [kg]
1	4838	C	GM300S36B2 Assembly	--	1	26.5 kg
2*	3157	A	430 mm Dia Shroud	PVC	1	0.0 kg
3	3158	A	Concrete Encasement	Concrete	1	41.4 kg
4	3159	A	Tiltlift Bolt - Swift Lift	--	2	0.0 kg
5	3160	A	Reinforcement Bars	--	1	0.0 kg

Copyright : Gatic Pty Ltd - 2020

REVISION	No	DATE	DESCRIPTION	BY	CHKD.
D	10-08-20		COVER AND FRAME REVISED.	F.M.	S.S.
C	16-05-13		COMPONENTS REVISED AND CODE CHANGED.	S.S.	S.S.
B	27-05-05		COMPONENTS REVISED.	H.C.	C.A.
A	20-12-04		INITIAL RELEASE.	H.C.	C.A.

UNLESS OTHERWISE STATED
 ALL MEASURES IN MILLIMETERS.
 GENERAL CAST TOLERANCES: CT9 to ISO 8062.
 CASTING RADII: 3 mm
 DRAFT TAPERS: 2°

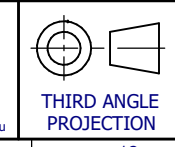
LINEAR MACHINING TOLERANCE:
 X. ±0.25 mm
 X.X ±0.10 mm

ANGULAR MACHINING TOLERANCE:
 X. ±0.5°
 X.X ±0.1°

NOM = Nominal; O/A = Overall; TYP = Typical; C/O = Clear Opening

FINISH: ALL CAST SURFACES TO BE PAINTED AS SPECIFIED. FABRICATED COMPONENTS TO BE HOT DIP GALVANISED TO AS/NZS 4680. LIGHT FILM OF GATIC SEALING GREASE TO BE APPLIED ON ALL MACHINED SURFACES.

GATIC
 GATIC PTY LTD
 9-15 Radford Road, PO Box 312, Reservoir VIC. 3073
 Ph: 03 9316 2666 Fax: 03 9315 0099 www.gatic.com.au



DESIGNED:	BY	DATE	CODE:	TITLE:
	H.C.	20-12-04	GMCE300S36B2	360 C/O M-SHAFT COVER CLASS B CONCRETE ENCASED ASSEMBLY
CHECKED:	C.A.	20-12-04	SCALE: N.T.S.	MASS: 73.5 kg
APPROVED:	C.A.	20-12-04	FORMAT: A3	REV: D
			SHEET: 1 of 1	

ORG. No: 1976